



PRODUCT SPECIFICATION

KADI Model: KD080AWU31EP-FC40

CUSTOMER Model: -

Description: 8.0 " TFT-LCD Module with CTP

Version: 6.0

KADI	PREPARED BY	CHECKED BY	APPROVED BY
SIGNATURE			
DATE	2025.8.8	2025.8.8	2025.8.8

CUSTOMER APPROVAL	SIGNATURE	DATE



Contents

1. General Specifications	4
2. Absolute Maximum Ratings	5
3. Electrical Characteristics	5
4. Interface Pin Assignment	7
5. Interface Characteristics	8
6. Optical Specifications	14
7. Reliability Test Items	18
8. Mechanical Drawing	19
9. Packing	20
10. Precautions for Use of LCD modules	21



1. General Specifications

1.1 LCM General Information

Item	Specification	Unit
LCD Size	8.0	inch
Number of Pixels	1200 (H) RGB x 1920 (V)	pixels
Display Mode	Normally Black	-
Viewing Direction	Free	-
Interface	MIPI	-
Display Colors	16.7M	colors
Outline Dimension	134.90 (H) x 198.30 (V) x 4.0 (D)	mm
Active Area	107.64 (H) x 172.22 (V)	mm
Pixel Pitch	0.0897 (H) x 0.0897 (V)	mm
Driver IC	HX8279-D01*2	-
Operation Temperature	-20~70	°C
Storage Temperature	-20~70	°C

1.2 Touch Panel Information

Item	Specification
Touch Structure	G+G
Bonding Type with LCM	OCA Optical Bonding
Driver IC	EXC81W32
Interface	USB
Touch Count Max	10 Points
Surface treatment	-
Surface hardness	≥9H (Pencil, Loading 500g, 45 deg)
I2C slave address	0x2A
Origin of coordinate	Top Left Corner

Note1: Requirements on environmental protection RoHS compliant.



2. Absolute Maximum Ratings

Item	Symbol	MIN.	MAX.	Unit	Note
Analog Supply voltage	VCI	-0.3	5.0	V	Note 1

Note 1: Permanent damage may occur to the LCD module if beyond this specification.

Functional operation should be restricted to the conditions described under normal operating conditions.

3. Electrical Characteristics

3.1 Recommended Operating Condition for TFT LCD

Item	Symbol	Min.	Typ.	Max.	Unit	Note
Analog Supply voltage	VCI	3.0	3.3	3.6	V	
Analog supply current	I _{VCI}	-	120	-	mA	PHOTO
Logic input voltage	V _{IH}	0.7*VCI	-	VCI	V	
	V _{IL}	GND	-	0.3*VCI	V	

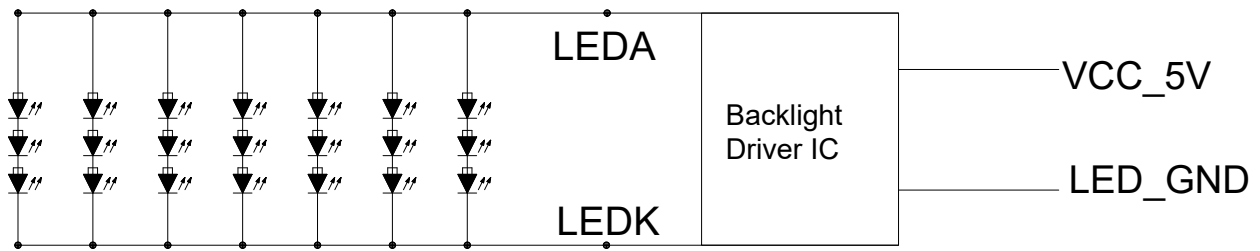
3.2 Recommended Driving Condition for Backlight

Item	Symbol	Min.	Typ.	Max.	Unit	Note
Driving Current	I _{BLU}	-	600	-	mA	
Driving Voltage	V _{BLU}	-	5.0	-	V	
Power consumption	W _{BLU}	-	3.0	-	W	
LED Life-Time	N/A	-	30,000	-	Hours	Ta=25°C Note 1

Note 1: LED lifetime is defined as the module brightness decay 50% of original brightness at Ta=25 degree, typical current.



Note 2:LED circuit :



CIRCUIT DIAGRAM

$V_F = 16.2 \sim 17.4V$; $I_F = 140mA$

3.3 Touch Panel

Item	Symbol	Min.	Typ.	Max.	Unit	Note
Power Supply voltage	3.3V	-	3.3	-	V	
Analog supply current	$I_{3.3V}$	-	TBD	-	mA	3.3V=3.3V
Input high-level voltage	V_{IH}	$0.7 \times 3.3V$	-	3.3V	V	
Input low -level voltage	V_{IL}	GND	-	$0.3 \times 3.3V$	V	



4. Interface Pin Assignment

4.1 LCM Pin Assignment

No.	Symbol	Description
1-3	V _{BLU} 5V	Power for LED backlight (5V)
4	NC	No connection
5	GND(ID1)	GND(LCM_ID1)
6	PWM	PWM Dimming control
7	LED_EN	Backlight on/off control
8	Reset 1.8V	Global reset pin(1.8V)
9	GND	Ground
10	MIPI_D2+	MIPI Positive data signal(+)
11	MIPI_D2-	MIPI Negative data signal(-)
12	GND	Ground
13	MIPI_D1+	MIPI Positive data signal(+)
14	MIPI_D1-	MIPI Negative data signal(-)
15	GND	Ground
16	MIPI_CLK+	MIPI Positive clock signal(+)
17	MIPI_CLK-	MIPI Negative clock signal(-)
18	GND	Ground
19	MIPI_D0+	MIPI Positive data signal(+)
20	MIPI_D0-	MIPI Negative data signal(-)
21	GND	Ground
22	MIPI_D3+	MIPI Positive data signal(+)
23	MIPI_D3-	MIPI Negative data signal(-)
24	GND	Ground
25	GND(ID2)	GND(LCM_ID2)
26	NC	No connection
27-29	VCI 3.3V	Power supply(3.3V)
30	GND	Ground

4.2 Touch FPC Pin Assignment

No.	Symbol	Description
1	GND	Ground
2	GND	Ground
3	TP_DN	Data- input
4	TP_DP	Data+ input
5	GND	Ground
6	TP_ERPORT	GPIO Signal
7	NC	No connection
8	NC	No connection
9	3.3V	Power supply for CTP(3.3V)
10	3.3V	Power supply for CTP(3.3V)

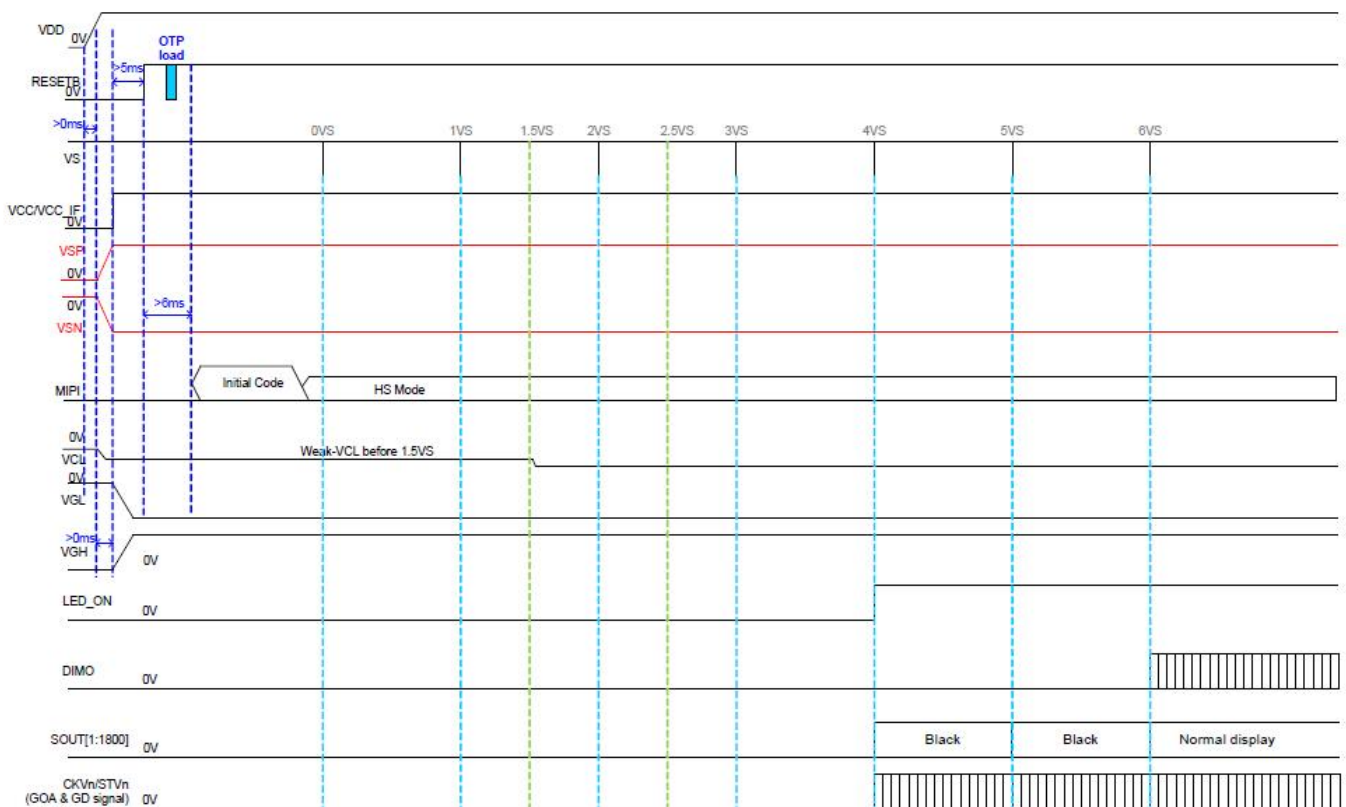


5. Interface Characteristics

5.1 Power on/off sequence

5.1.1 Power on sequence PWRMD=1→Max. Power on time=6.0VS

After reset state or exit STB mode, the power on sequence will start. One SCHOTTKY diode is necessary between VGL and GND when VDD and VSP start at the same time.



Note: (1) Finish to write the GOA MUX (page1 registers) and GOA timing setting (page3 registers) within 50ms after reset pulls to high

Figure 5.7: Power on sequence with PWRMD=1 and repair OP disable



5.1.2 Power off sequence PWRMD=1→Max. Power off time=4.5VS

When enter STB mode, the STBYB signal will be set to low then the power off sequence will start.

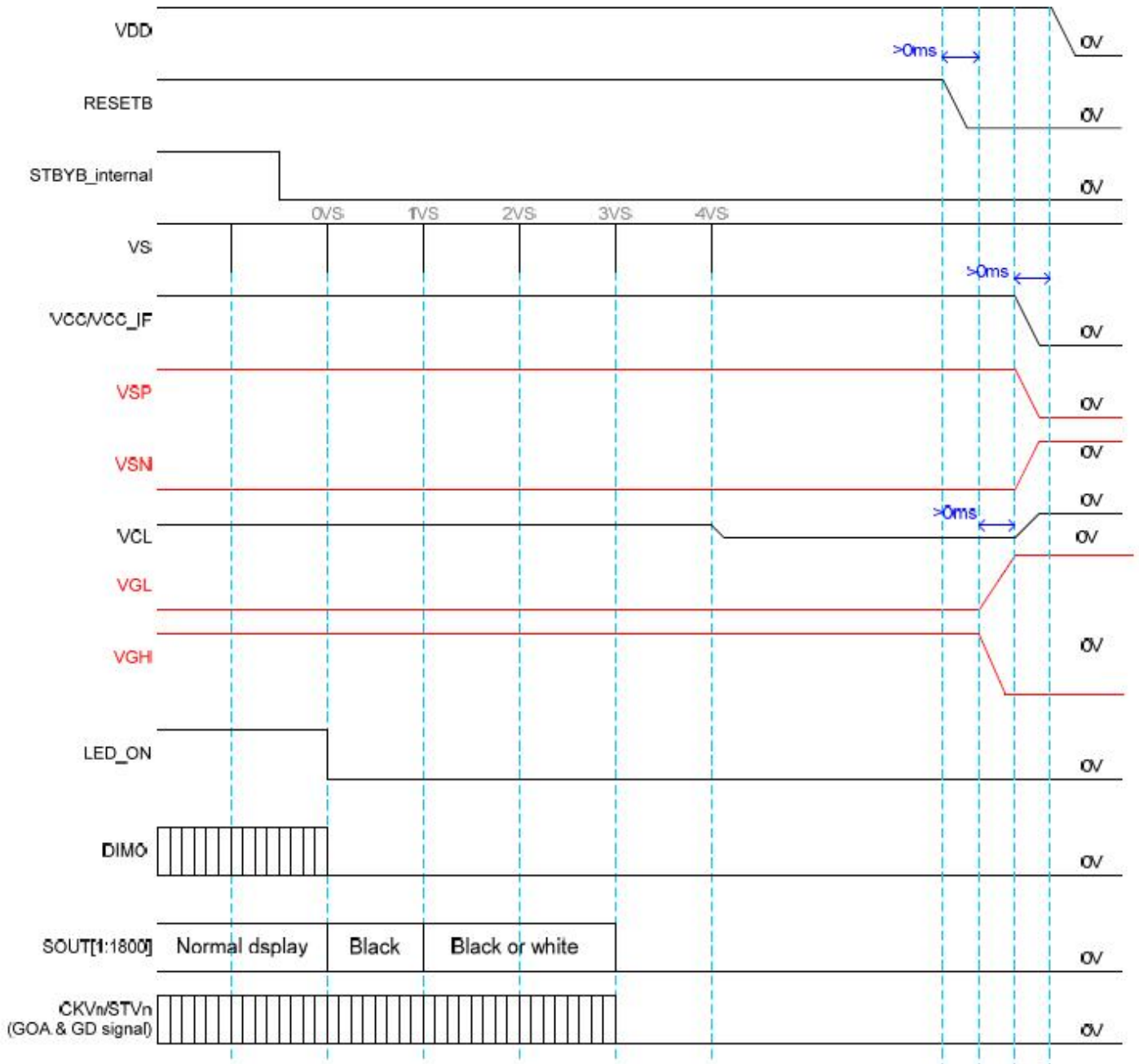


Figure 5.8: Power off sequence with PWRMD=1



5.2 AC Characteristics

5.2.1 MIPI AC characteristics

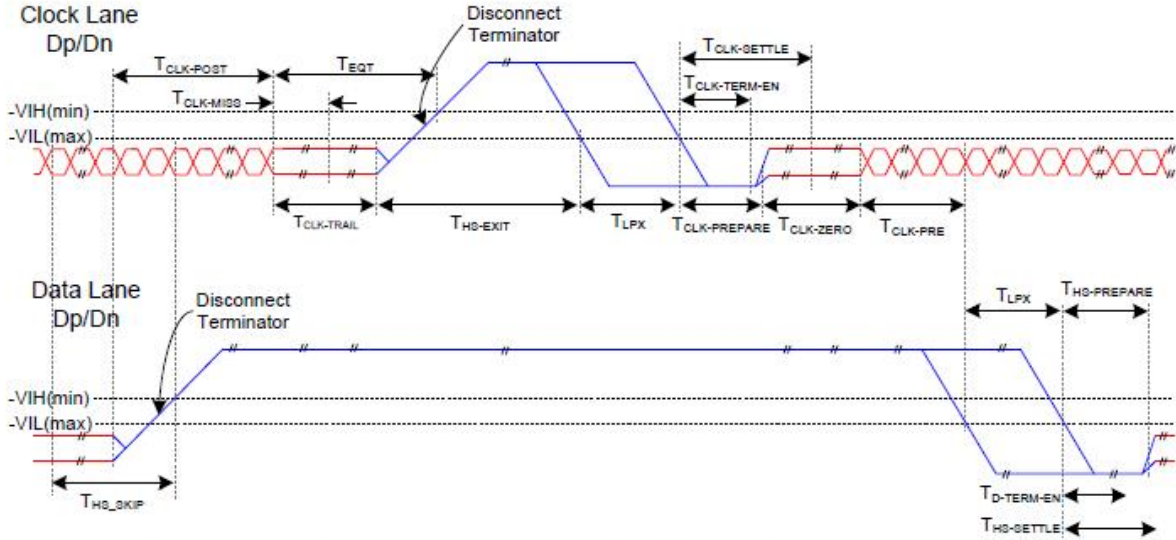


Figure 13.1: Switching the clock lane between clock transmission and low-power mode

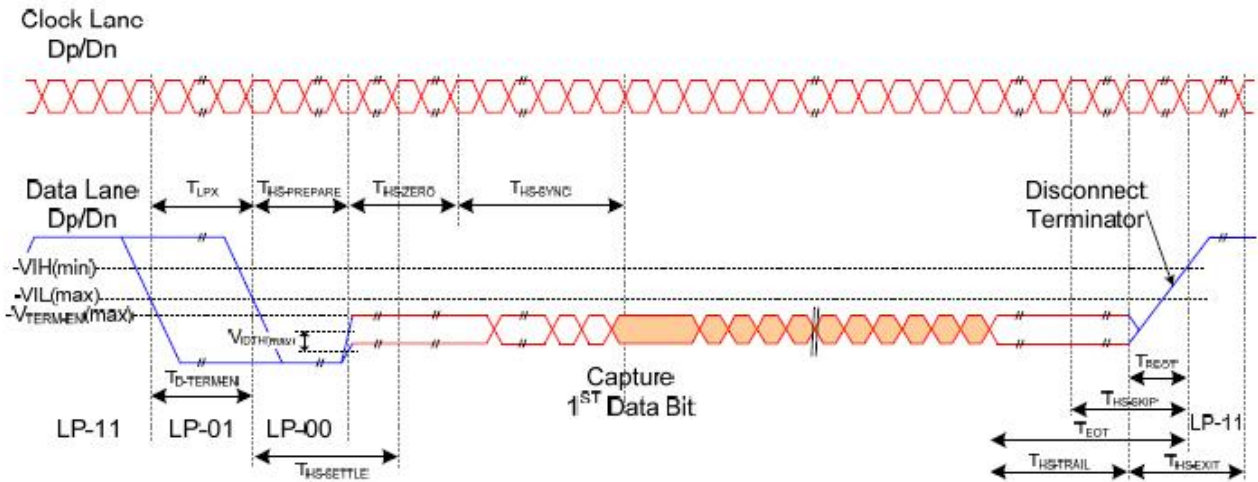


Figure 13.2: Timing of high-speed data transmission in bursts

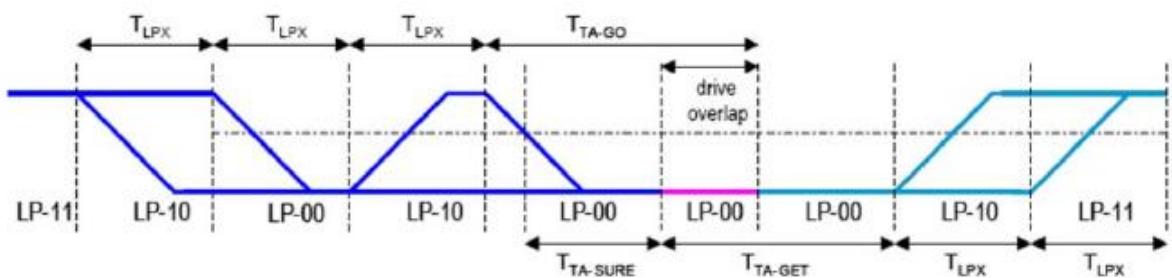


Figure 13.3: Turnaround Procedure



MIPI AC Characteristics

Parameter	Description	Spec.			Unit
		Min.	Typ.	Max.	
T _{REOT}	30%-85% rise time and fall time	-	-	35	ns
T _{CLK-MISS}	Timeout for receiver to detect absence of Clock transitions and disable the Clock Lane HS-RX.	-	-	60	ns
T _{CLK-POST} *1	Time that the transmitter continues to send HS clock after the last associated Data Lane has transitioned to LP Mode. Interval is defined as the period from the end of T _{HS-TRAIL} to the beginning of T _{CLK-TRAIL} .	60 ns + 52*UI (For DCS)	-	-	ns
T _{CLK-PRE}	Time that the HS clock shall be driven by the transmitter prior to any associated Data Lane beginning the transition from LP to HS mode.	8	-	-	ns
T _{CLK-SETTLE}	Time interval during which the HS receiver shall ignore any Clock Lane HS transitions, starting from the beginning of T _{CLK-PRE} .	95	-	300	ns
T _{CLK-TERM-EN}	Time for the Clock Lane receiver to enable the HS line termination, starting from the time point when Dn crosses V _{IL,MAX} .	Time for Dn to reach V _{TERM-EN}	-	38	ns
T _{HS-SETTLE}	Time interval during which the HS receiver shall ignore any Data Lane HS transitions, starting from the beginning of T _{HS-PREPARE} .	85 ns + 6*UI	-	145 ns + 10*UI	ns
T _{EOT}	Time from start of T _{HS-TRAIL} or T _{CLK-TRAIL} period to start of LP-11 state	-	-	105ns+48*UI	-
T _{HS-EXIT} ⁽¹⁾	time to drive LP-11 after HS burst	100	-	-	ns
T _{HS-PREPARE}	Time to drive LP-00 to prepare for HS transmission	40ns + 4*UI	-	85ns+6*UI	ns
T _{HS-PREPARE} + T _{HS-ZERO}	T _{HS-PREPARE} + Time to drive HS-0 before the Sync sequence	145ns + 10*UI	-	-	ns
T _{HS-SKIP}	Time-out at RX to ignore transition period of EoT	40	-	55ns+4*UI	ns
T _{HS-TRAIL}	Time to drive flipped differential state after last payload data bit of a HS transmission burst	60 + 4*UI	-	-	ns
T _{LPX}	Length of any Low-Power state period	50	-	-	ns
Ratio T _{LPX}	Ratio of T _{LPX(MASTER)} /T _{LPS(SLAVE)} between Master and Slave side	2/3	-	3/2	-
T _{TA-GET}	Time to drive LP-00 by new TX	5*T _{LPX}			ns
T _{TA-GO}	Time to drive LP-00 after Turnaround Request	4*T _{LPX}			ns
T _{TA-SURE}	Time-out before new TX side starts driving	T _{LPX}	-	2*T _{LPX}	ns

Note: (1) For image transmission:

T_{CLK-POST} min value =164 when MIPI max frequency per lane = 0.53Gbps.

T_{CLK-POST} min value =112 when MIPI max frequency per lane = 1Gbps



5.2.2 MIPI data-clock timing specification

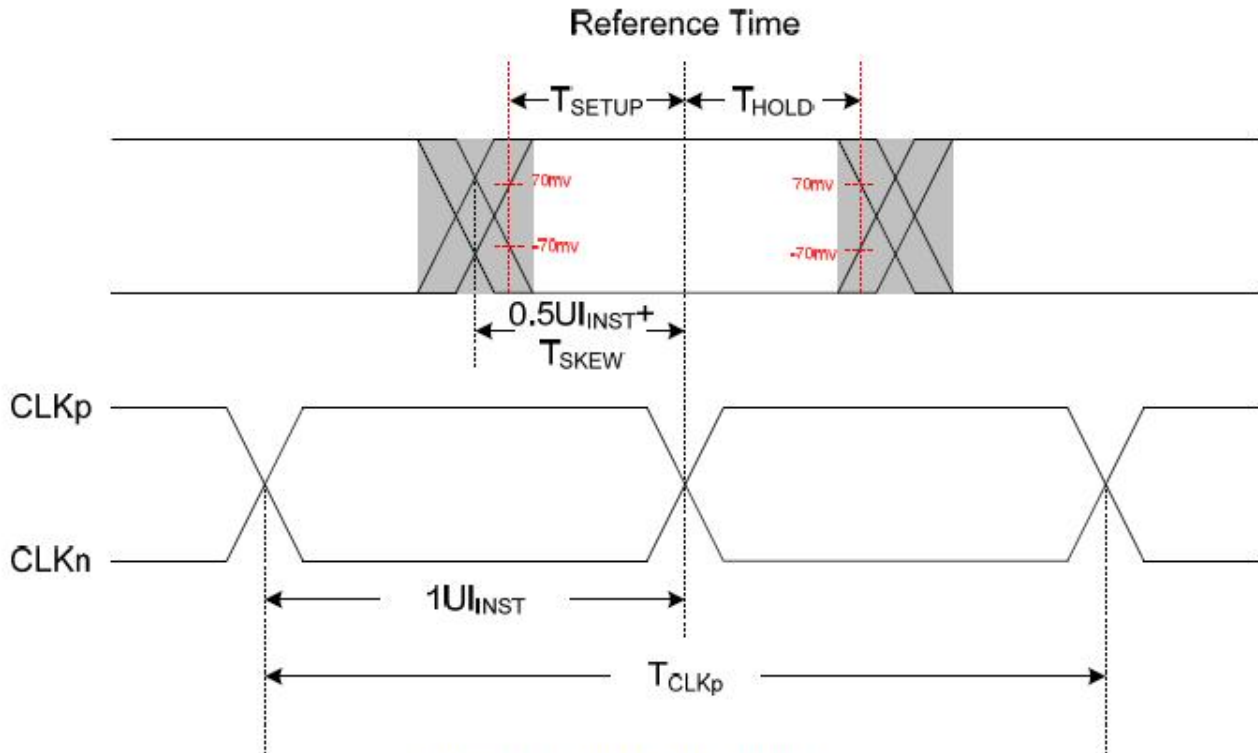


Figure 13.4: Data to clock timing

Parameter	Symbol	Spec.			Unit
		Min.	Typ.	Max.	
UI instantaneous	UI _{INST}	1.0	-	12.5 ⁽¹⁾	ns
Data to clock setup time	T _{SETUP}	0.15	-	-	UI _{INST}
Data to clock hold time	T _{HOLD}	0.15	-	-	UI _{INST}

Note: (1) This value corresponds to a minimum 80 Mbps data rate.



5.2.3 Timing requirements for RESETB

The closed interval of low can be shown as the following.

(VDD=1.7V~2.0V, VSS=0V, T_{OPR} =-20°C~+85°C)

Parameter	Symbol	Conditions	Spec.			Unit
			Min.	Typ.	Max.	
Reset low pulse width	Trst	-	20	-	-	μS

Table 13.5: Reset timing

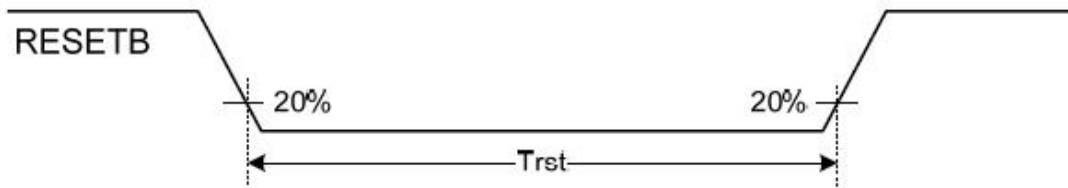


Figure 13.6: Reset timing



6. Optical Specifications

Item	Symbol	Condition	Min.	Typ.	Max.	Unit	Note
Viewing Angle (CR≥10) B/L ON	θ_T	$\Phi=90^\circ$ (12 o'clock)	80	85	-	deg	Note2
	θ_B	$\Phi=270^\circ$ (6 o'clock)	80	85	-	deg	Note2
	θ_L	$\Phi=180^\circ$ (9 o'clock)	80	85	-	deg	Note2
	θ_R	$\Phi=0^\circ$ (3 o'clock)	80	85	-	deg	Note2
Response Time	T_{ON}	Normal $\theta=\Phi=0^\circ$	-	13	17	msec	Note4
	T_{OFF}		-	13	17	msec	Note4
Contrast Ratio	CR		-	900	-	-	Note1 Note3
Color Chromaticity	W_x		0.3170	0.3470	0.3770	-	Note1 Note5
	W_y		0.3271	0.3571	0.3871	-	Note1 Note5
Luminance	L		550	650	-	cd/m ²	Note1 Note7
Luminance Uniformity	Y_U		75	80	-	%	Note1 Note6
NTSC	-		-	55.7	-	%	-

Note 1: Definition of optical measurement system

The optical characteristics should be measured in dark room. After 5 minutes operation, the optical properties are measured at the center point of the LCD screen. All input terminals LCD panel must be ground when measuring the center area of the panel.

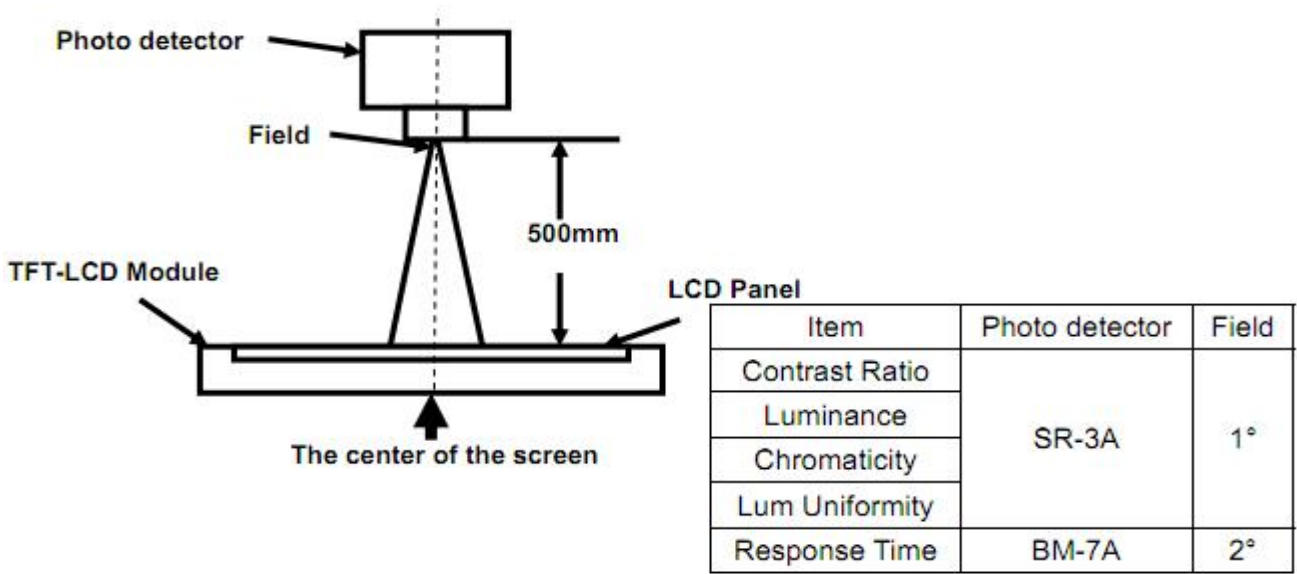


Fig 1

Note 2: Definition of viewing angle range and measurement system.

viewing angle is measured at the center point of the LCD by CONOSCOPE(ergo-80).

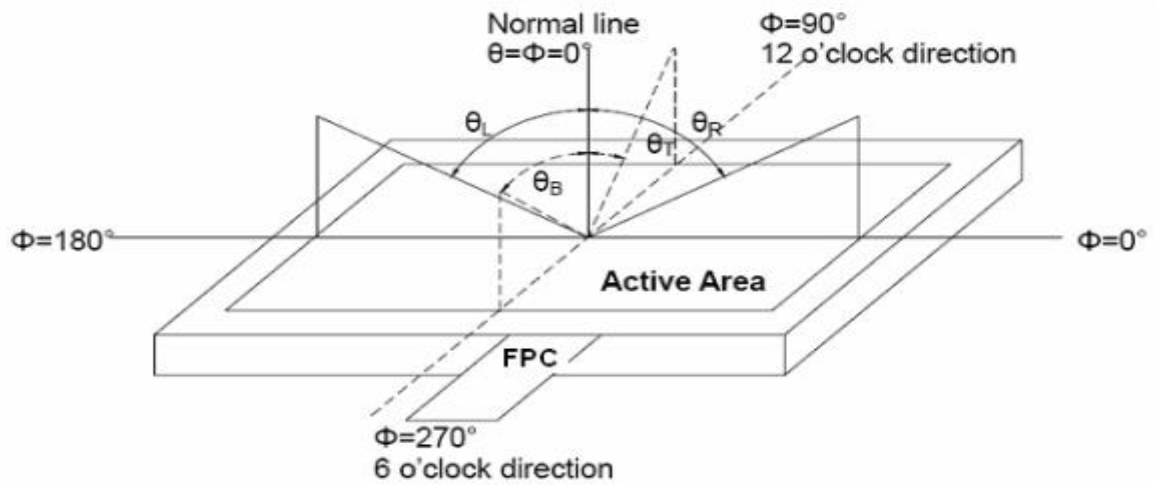


Fig 2 Definition of viewing angle

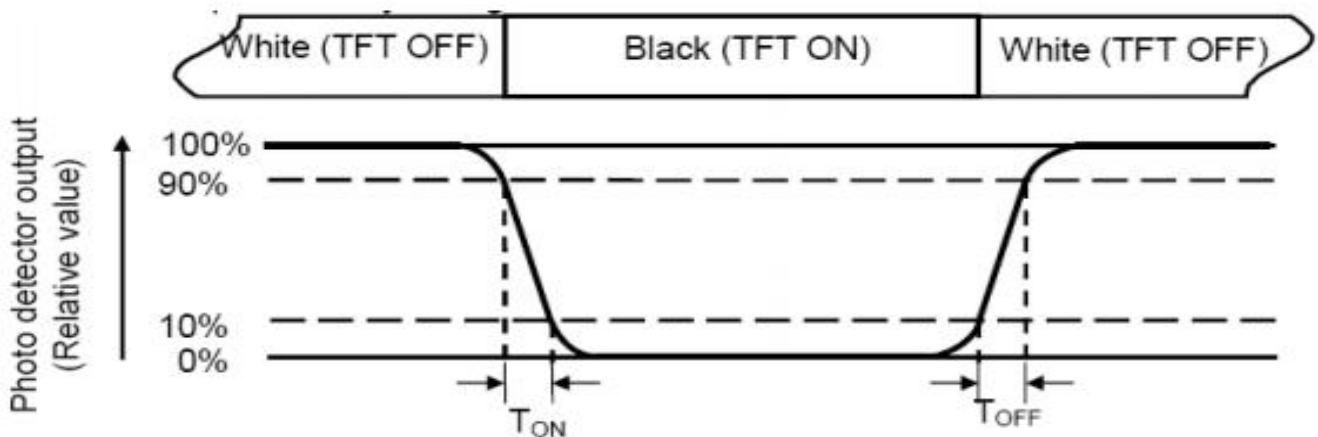


Note 3: Definition of contrast ratio

$$CR = \frac{\text{Luminance with all pixels white}}{\text{Luminance with all pixels black}}$$

Note 4: Definition of Response time

The response time is defined as the LCD optical switching time interval between “White” state and “Black” state. Rise time (TON) is the time between photo detector output intensity changed from 90% to 10%. And fall time (TOFF) is the time between photo detector output intensity changed from 10% to 90%.



Note 5: Definition of color chromaticity (CIE1931)

Color coordinates measured at center point of LCD.

Note 6: Definition of Luminance Uniformity

The luminance uniformity in surface luminance is determined by measuring luminance at each test position 1 through n, and then dividing the maximum luminance of n points luminance by minimum luminance of n points luminance. For more information see FIG.3-a/b

Note 7: Surface luminance is the luminance with all pixels displaying white.

L_v = Average Surface Luminance with all white pixels (P1, P2, P3, ..., Pn)

For more information see FIG.3-a/b



Note 8:

H,V : Active area(see Figure b)

Light spot size $\varnothing = 5\text{mm}$ (BM-5) or $\varnothing = 7.7\text{mm}$ (BM-7)50cm distance or compatible distance from the LCD surface to detector lens. test spot position : see Figure b.

measurement instrument : TOPCON's luminance meter SR-3A or BM-7 or compatible (see Figure 1).

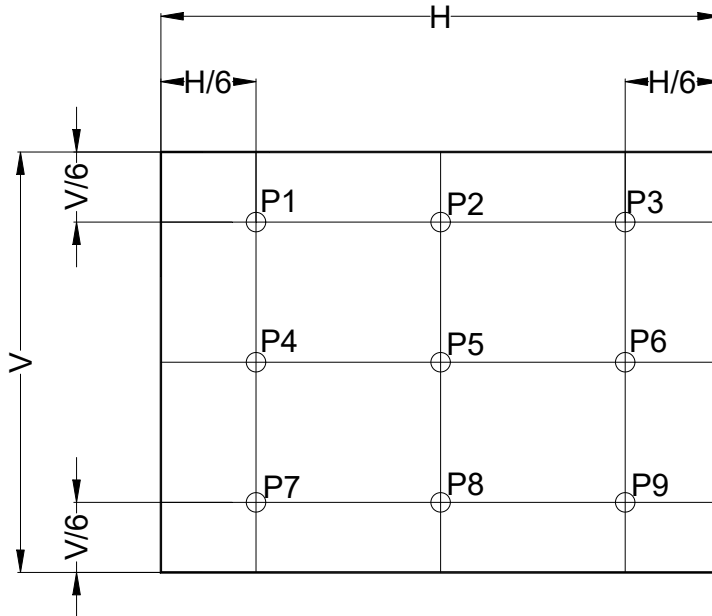


Fig. 3-b Definition of points



7. Reliability Test Items

Test Item	Test Conditions
High Temperature Storage	Ta= +70°C 96hrs
Low Temperature Storage	Ta= -20°C 96hrs
High Temperature Operation	Ta= +70°C 96hrs
Low Temperature Operation	Ta= -20°C 96hrs
High Temperature and Humidity Storage	Ta= +60°C, 90% RH 96hrs
Thermal Shock (Non-operation)	-20°C/30 min ~ +70°C/30 min for 20 cycles Start with cold temperature end with high temperature
Electro Static Discharge	Contact = ± 4 kV, class B Air = ± 8 kV, class B R=330Ω,C=150pF
Vibration	Sweep: 10Hz~55Hz~10Hz Stroke: 1.5mm 2 hrs for each direction of X .Y. Z.
Mechanical Shock	60G 6ms,±X,±Y,±Z 3 times for each direction
Package Drop Test	Height: 60 cm 1 corner, 3 edges, 6 surfaces

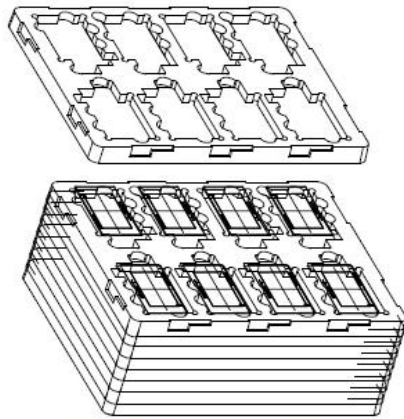
Notes: The test result shall be evaluated after the sample has been left at room temperature and humidity for 2 hours without load. No condensation shall be accepted. The sample will not be accepted if appear these defects:

- 1). Air bubble in the LCD
- 2). Seal leak or Glass crack
- 3). Non display or abnormal display
- 4). Brightness reduction >50%

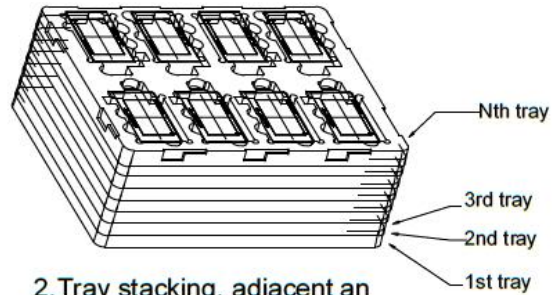


9. Packing

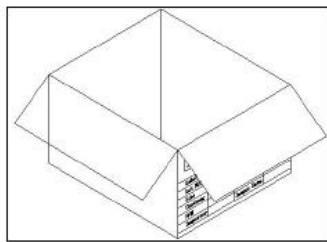
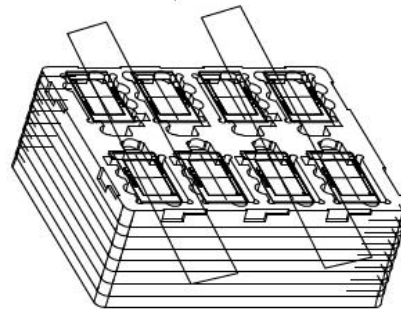
Packing Method



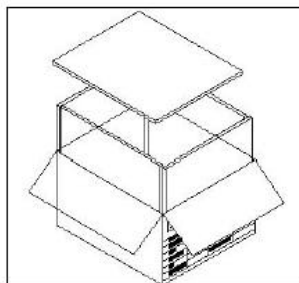
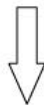
1. Put LCD module into tray cavity



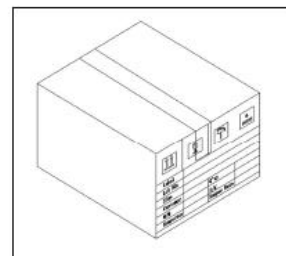
2. Tray stacking, adjacent an upper lower layer with a 180-degree rotation



4. put the tray stack into carton



5. 6 sides of white foams inside the box



6. Carton sealing with adhesive tape



10. Precautions for Use of LCD modules

10.1 Handling Precautions

10.1.1. The display panel is made of glass. Do not subject it to a mechanical shock by dropping it from a high place, etc.

10.1.2. If the display panel is damaged and the liquid crystal substance inside it leaks out, be sure not to get any in your mouth, if the substance comes into contact with your skin or clothes, promptly wash it off using soap and water.

10.1.3. Do not apply excessive force to the display surface or the adjoining areas since this may cause the color tone to vary.

10.1.4. The polarizer covering the display surface of the LCD module is soft and easily scratched. Handle this polarizer carefully.

10.1.5. If the display surface is contaminated, breathe on the surface and gently wipe it with a soft dry cloth. If still not completely clear, moisten cloth with one of the following solvents:

- Isopropyl alcohol
- Ethyl alcohol

Solvents other than those mentioned above may damage the polarizer. Especially, do not use the following:

- Water
- Ketene
- Aromatic solvents

10.1.6. Do not attempt to disassemble the LCD Module.

10.1.7. If the logic circuit power is off, do not apply the input signals.

10.1.8. To prevent destruction of the elements by static electricity, be careful to maintain an optimum work environment.

10.1.8.1. Be sure to ground the body when handling the LCD Modules.

10.1.8.2. Tools required for assembly, such as soldering irons, must be properly ground.

10.1.8.3. To reduce the amount of static electricity generated, do not conduct assembly and other work under dry conditions.

10.1.8.4. The LCD Module is coated with a film to protect the display surface. Be care when peeling off this protective film since static electricity may be generated.

10.2 Storage Precautions

10.2.1. When storing the LCD modules, avoid exposure to direct sunlight or to the light of fluorescent lamps.

10.2.2. The LCD modules should be stored under the storage temperature range if the LCD modules will be stored for a long time, the recommend condition is :

Temperature : 0°C ~40°C Relatively humidity: ≤80%

10.2.3. The LCD modules should be stored in the room without acid, alkali and harmful gas.

10.3 Transportation Precautions

The LCD modules should be no falling and violent shocking during transportation, and also should avoid excessive press, water, damp and sunshine.

10.4 Packaging instructions

when the customers using trays, they have to stack the adjacent trays in a 180° staggered to prevent pressure that could cause product damage.